



Summerleys, Edlesborough, LU6 2HR  
Asking price £500,000

**Sears & Co**  
estate & letting agents





[www.searsandco.co.uk](http://www.searsandco.co.uk)

**Sears & Co**

A rare opportunity to purchase this re modelled and extended, four bedroom detached property situated on Summerleys in the desirable village of Edlesborough. The ground floor layout comprises an entrance hallway, downstairs w/c, 17FT living room, 23FT open plan reception space with luxuriously appointed kitchen, utility room and a bedroom. The first floor is occupied by the principal bedroom with an open plan en suite, two further bedrooms and a family bathroom. Externally the property includes driveway parking to the front and a low maintenance rear garden with covered seating area. Council tax band E. Contact sole appointed selling agents Sears & Co to arrange a viewing.

#### **Front Door**

#### **Entrance Hallway**

Built in foot mat. Wood flooring. Vertical radiator. Under stairs storage. Recessed down lighting. Access to the downstairs w/c, living room and open plan reception space. Stairs rising to the first floor accommodation.

#### **Downstairs W/C**

Double glazed window. Fitted with a low level w/c and a cabinet enclosed wash hand basin. Chrome heated towel rail. Wood flooring. Tiling to splash back area. Tiled feature wall. Recessed down lighting.

#### **Living Room**

Two double glazed windows. Wood flooring. Media wall with storage and electric fire. (TV not included) Vertical radiator.

#### **Kitchen Area**

Fitted with a range of eye and base level units

with quartz marble effect work surfaces over also forming up stands and an island. Inset sink unit with mixer tap. Built in oven, hob and extractor over. Integrated dishwasher and slim wine cooler. Space for a free standing American fridge/freezer. Wood flooring. Vertical radiator. Tiling to splash back areas. Recessed down lighting. Open plan to the rest of the open plan reception space.

#### **Open Plan Reception Space**

Bi folding doors leading to the garden. Two vertical radiators. Wood flooring. built in media bench/storage. Feature tiled wall with wood effect tiling. Access to the utility room and ground floor bedroom.

#### **Utility Room**

Fitted with some storage units with a work surface over. Sink and drainer unit with mixer tap. Space for a stacked washing machine and tumble dryer. Wood flooring. Extractor fan. Recessed down lighting.

#### **Ground Floor Bedroom**

Double glazed window. Radiator. Wood effect flooring.

#### **First Floor Landing**

Double glazed window. Radiator. Access to the loft. Access to the three bedrooms and family bathroom. Store cupboard.

#### **Bedroom**

Double glazed window. Radiator. Wood effect flooring. open plan to the en suite area.

#### **En Suite Area**

Double glazed window. Fitted with a wet room style shower area, enclosed cistern w/c and a

vanity unit with mixer tap. Tiled flooring. Partially tiled walls. Chrome heated towel rail. Recessed down lighting.

#### **Bedroom**

Double glazed window. Radiator. Wood effect flooring.

#### **Bedroom**

Double glazed window. Radiator. Wood effect flooring.

#### **Family Bathroom**

Double glazed window. Refitted with a three piece suite to include a panel enclosed bath with glass screen and shower over, vanity wash hand basin with mixer tap and a low level w/c. Tiled flooring. Partially tiled walls. Chrome heated towel rail. Recessed down lighting.

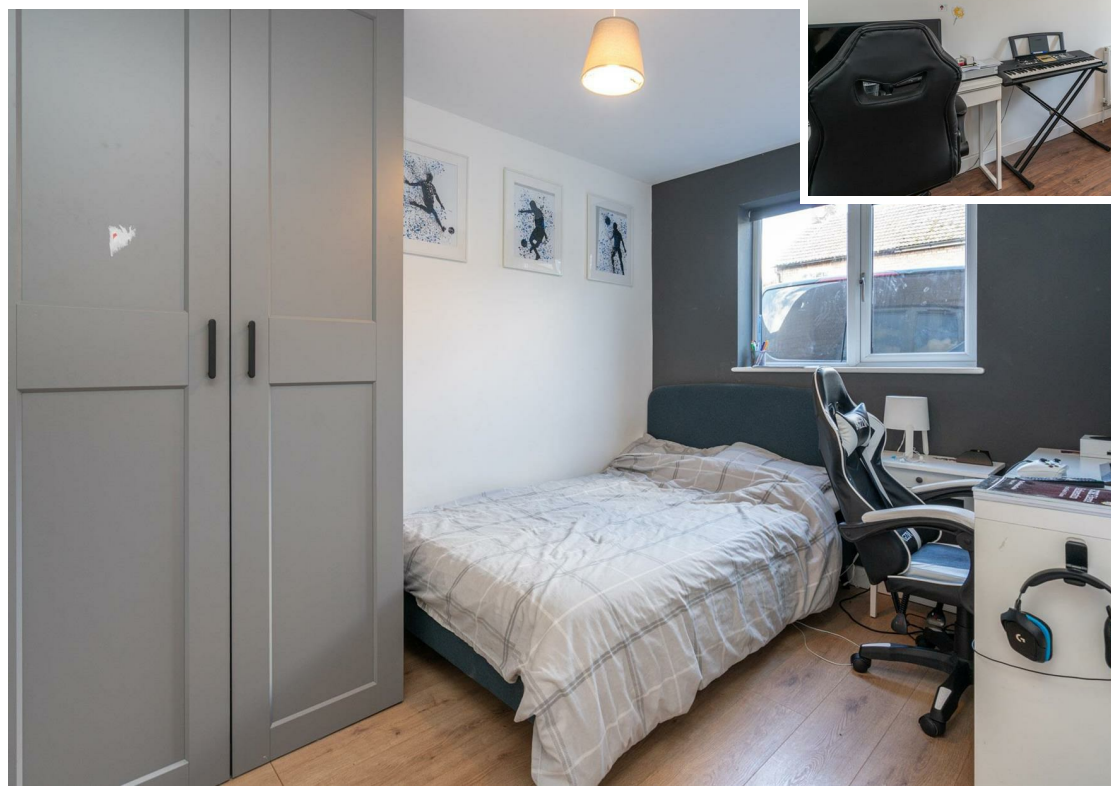
#### **To The Front**

An area of hard standing providing parking. Gated access to the garden.

#### **To The Rear**

A private garden arranged with an area of artificial lawn and covered seating area with adjoining store shed. Gated side access. Enclosed primarily by timber fencing. Outside tap.



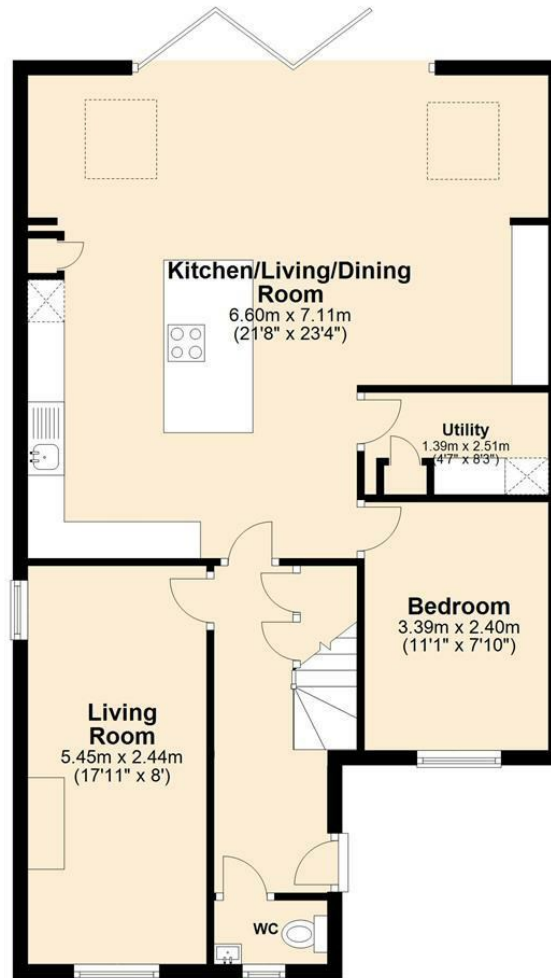






## Ground Floor

Approx. 77.4 sq. metres (832.9 sq. feet)



## First Floor

Approx. 52.2 sq. metres (562.3 sq. feet)



Total area: approx. 129.6 sq. metres (1395.2 sq. feet)

Disclaimer - Floor plan is for marketing purposes only and is to be used as a guide - SKM Studio  
Plan produced using PlanUp.

The Agent has not tested any apparatus, equipment, fixtures and fittings or services and so cannot verify that they are in working order or fit for the purpose. A Buyer is advised to obtain verification from their Solicitor or Surveyor. References to the Tenure of a Property are based on information supplied by the Seller. The Agent has not had sight of the title documents. A Buyer is advised to obtain verification from their Solicitor. Items shown in photographs are NOT included unless specifically mentioned within the sales particulars. They may however be available by separate negotiation. Buyers must check the availability of any property and make an appointment to view before embarking on any journey to see a property. All floorplans and photographs contained in this brochure and for illustrative purposes only measurements cannot be guaranteed and should not be relied upon. Photographs may have had blue sky added and/or brightened. For further information see the Property Misdescriptions Act.

[www.searsandco.co.uk](http://www.searsandco.co.uk)

**Sears & Co**

Hemel Hempstead Office: 67 High Street, Old Town, Hemel Hempstead, Hertfordshire, HP1 3AF  
call: 01442 254 100

Score	Energy rating	Current	Potential
92+	A		
81-91	B		
69-80	C	69 C	80 C
55-68	D		
39-54	E		
21-38	F		
1-20	G		